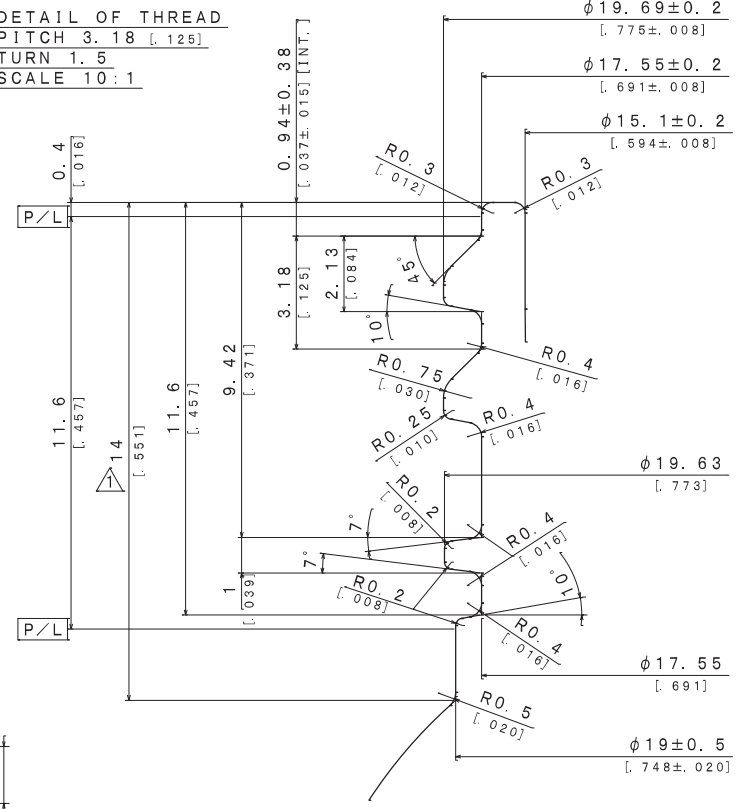


**DETAIL OF THREAD**  
 PITCH 3.18 [0.125]  
 TURN 1.5  
 SCALE 10:1



**H3 PLASTICS**  
 H3 Plastics LLC  
 (801) 900-5738

Material:	PET
Neck Finish:	20-410
Overflow Capacity:	39 ± 2mL (1.32 ± .068 fl oz)

REVISIONS			

Scale: 1:1 | Drawn By: MI | Date: 8-22-2022

**1oz Cosmo**  
**20-410**

Approved By: JSH | Drawing NO: AM-19973-01

Dwg Rev: A

All measurements are in millimeters/inches

Min Thk:	Weight:	Color:	Std Pack:
.25"	6.5 ± .5	All Colors	Tumble

**Disclaimer**  
 H3 Plastics assumes no responsibility for form, fit, and function of closures, accessories, and/or shelf life and compatibility of intended contents with this bottle.

**Proprietary and Confidential**  
 The information contained in this drawing is confidential. Any reproduction in part or as a whole without the written permission of H3 Plastics LLC is prohibited.